

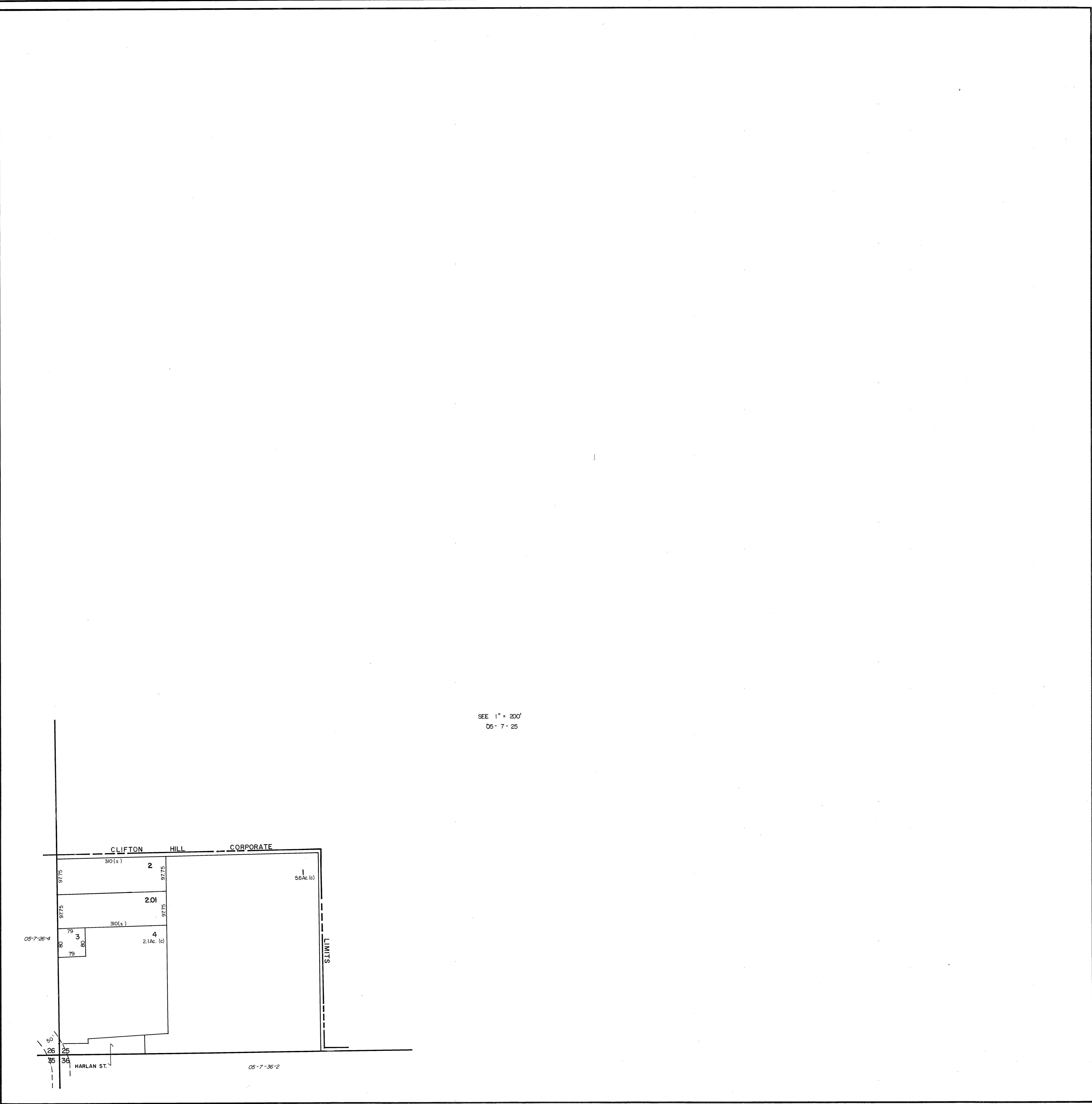
PLAN HOLD CORPORATION - IRVINE, CALIFORNIA
REGISTERED BY NUMBER 07548

PLAN HOLD CORPORATION - IRVINE, CALIFORNIA
REGISTERED BY NUMBER 07548

PLAN HOLD CORPORATION - IRVINE, CALIFORNIA
REGISTERED BY NUMBER 07548

PLAN HOLD CORPORATION - IRVINE, CALIFORNIA
REGISTERED BY NUMBER 07548

PLAN HOLD CORPORATION - IRVINE, CALIFORNIA
REGISTERED BY NUMBER 07548



OWNERSHIP MAP
RANDOLPH COUNTY, MISSOURI
 PREPARED UNDER THE DIRECTION OF
STATE TAX COMMISSION OF MISSOURI
 AND
RANDOLPH COUNTY TAX ASSESSOR
 PREPARED BY
ROBINSON AND ASSOCIATES, INC.
 306 OAK AVE., SPRUCE PINE, N.C. 28777

SCALE: 1" = 100'
 DATE OF MAP JUNE 9, 1981
 DATE OF PHOTOGRAPHY NOV., 1980
 AERIAL PHOTO NO. SW 25 - 54 - 16

SUBDIVISION INDEX

SUBD. NO.	SUBDIVISION NAME	PLAT BOOK	PAGE

LEGEND

STATE LINE	---	AREA (FROM DEED)	10.5Ac.
COUNTY LINE	---	AREA (CALCULATED)	10.5Ac. (c)
CORPORATION LINE	---	DIMENSION (FROM DEED)	16.5
DISTRICT LINE	---	DIMENSION (CALCULATED)	66'(s)
ROAD R/W	---	SUBDIVISION LOT NUMBER	23
TOWNSHIP & RANGE LINES	---	PARCEL NUMBER	45
RAILROAD R/W	---	WATER	---
PROPERTY LINE	---	INTERSTATE HIGHWAY	
LAND HOOK	---	U. S. HIGHWAY	
SECTION LINE	---	STATE HIGHWAY	
INTERIOR OR ORIGINAL TRACT LINE	---	COUNTY HIGHWAY	
BLOCK LIMIT (WHERE APPLICABLE)	---	ROADS, STREETS, CHURCHES, ETC.	BY NAME
		SECTION CORNERS	

MAP SHEET INDEX

6	5	4	3	2	1
03		02		01	
7	8	9	10	11	12
18	17	16	15	14	13
04		05		06	
19	20	21	22	23	24
30	29	28	27	26	25
09		08		07	
31	32	33	34	35	36

TOWNSHIP LOCATOR

	R16W	R15W	R14W	R13W	
T55N	04	03	02	01	
T54N		06	07	08	
T54N	05				
T53N	12	11	10	9	
T53N					
T52N	13	14	15	16	

SECTIONS S.W. 1/4 25

TWP. 54 N. RNG. 16 W.

33-05-7-25-3

MAP NUMBER

REVISIONS

DATE	BY	CHANGES OR ADDITIONS